

End of School Picnic

Boys and Girls • May 22

11:00 a.m. - 1:00 p.m. • \$10.00 per person • Reservation required

SUMMER CAMP

Camp Dolly... A week of Summer Fun



Campers bring a sack lunch. Snacks, beverages and a camp T-Shirt will be provided along with a certificate of fun.

Call: 769-0005

Mon. & Wed. - Sat. 10:00 - 5:00 p.m.
Closed Sundays, & Tuesdays

Visit our website at www.enchantedmansion.org
Support Louisiana Tourism, Visit A Museum

Two Sessions:

June 14-18th • July 12-16th

(Monday - Friday)

9:00 a.m. - 3:00 p.m.

Ages 6 - 12

\$150.00 Limited Enrollment
Reservations and deposit required

Camp activities include:

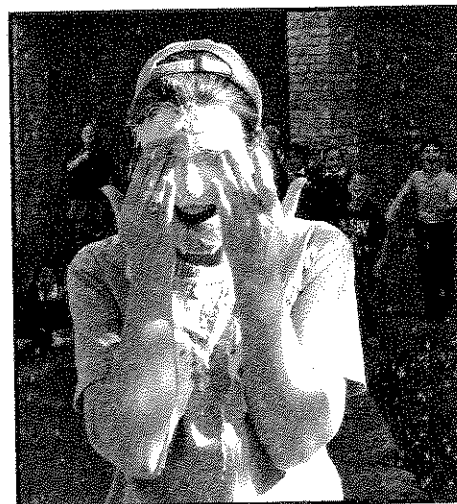
Crafts, exercise, storytelling, dancing, singing and games. Proper table manners, introductions, telephone manners and much more are taught in daily manners class.



A DOLL MUSEUM
BATON ROUGE, LOUISIANA

769-0005
190 Lee Drive

Gilmore gets "Pi-ed" by students



Principal Wendy Gilmore wipes whipped cream from her eyes after being "Pied" during the "Pi Day" celebration.

St. Jean Vianney Catholic School recently celebrated "Pi Day"—a day which was filled with math exercises and contests.

Students memorizing more decimal places of Pi than their classmates earned the right to throw chocolate pies at St. Jean faculty and staff members.

The pies were donated to the school by The Cake Goddess.

The Greek letter Pi is the symbol for the ratio of the circumference of a circle to its diameter.

Pi Day is celebrated by math enthusiasts around the world. Pi equals 3.1415926535... to infinity.

Sorority hosts weekend for parents

The Alpha Eta Chapter of Phi Mu Sorority recently celebrated Parents' Weekend with a Father/Daughter crawfish boil, followed by an LSU baseball game at Alex Box Stadium.

The mothers and their daughters enjoyed a beautiful luncheon with the theme, "Queen of the Jungle."

In addition to the luncheon, the event also

ed by area merchants.

The luncheon was chaired by Elaine Meroney and Brenda Johnson. Debra Gautreau, Lori Mann and Patti Simoneaux were committee members.



Ralnh's